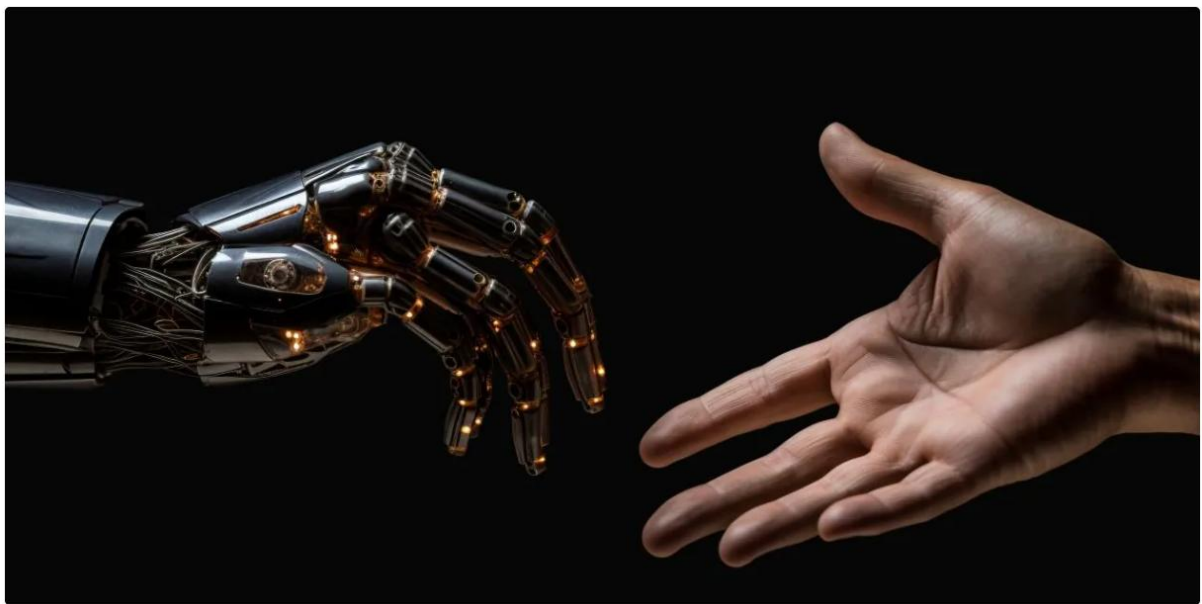


Singapore: NTU Master's Programmes Develop Next-Gen AI Leaders

AI • 2 October, 2025



Nanyang Technological University, Singapore (NTU Singapore) has announced the launch of four new master's degree programmes in 2026, designed to prepare professionals for an AI-driven future while addressing pressing needs in healthcare, business, culture and holistic medicine.

The programmes include the Master of Science in Artificial Intelligence in Medicine (AIMed), Master of Arts in Digital Humanities (MADH), Master of Science in Enterprise Artificial Intelligence and Master of Science in Chinese Medicine.

Each programme reflects NTU's interdisciplinary approach, combining expertise in medicine, engineering, humanities and professional education to equip graduates with both technical knowledge and broader ethical, cultural and clinical perspectives.

Professor Christian Wolfrum, NTU Deputy President and Provost, said it was crucial to prepare professionals who can harness AI responsibly and effectively.

“Beyond technical know-how, graduates must understand the ethical, cultural and clinical dimensions of AI so they can apply it in ways that truly benefit patients, enterprises and communities,” he explained.

He added that the new programmes will foster collaborations across sectors, enabling Singapore to develop leaders who can advance innovation, strengthen public trust and drive meaningful outcomes in an AI-driven future.

The AIMed programme, offered by NTU’s Lee Kong Chian School of Medicine, is Singapore’s first postgraduate course combining technical and clinical AI training for healthcare. It targets both clinicians and technologists, equipping them with practical AI skills to improve patient care while preparing graduates for roles such as Clinical AI Specialist, Healthcare Data Scientist and AI Governance Advisor.

Singapore’s first postgraduate programme in Digital Humanities, the MADH, will connect technology with humanistic inquiry. Students will learn to apply digital tools such as AI and machine learning to address cultural and social issues, while also shaping the responsible use of technology through humanities-based perspectives.

Open to graduates from both STEM and humanities backgrounds, the programme prepares students for careers in business, media, education, cultural heritage and beyond.

The Enterprise AI programme, offered through NTU PACE, is tailored for professionals seeking to integrate AI solutions into business strategy. With a focus on applied innovation, it emphasises AI product management, responsible governance and no- to low-code platforms, producing “AI-savvy” graduates ready for roles in digital transformation, AI consulting and enterprise innovation.

The MSc in Chinese Medicine, the first of its kind offered by a local university, is developed by NTU’s School of Biological Sciences. It combines classical Chinese medicine knowledge with modern research and clinical training, with opportunities to explore AI applications in diagnostics.

Students can specialise in areas such as gynaecology, acupuncture, or biomedical sciences, contributing to Singapore’s goal of integrating Western and Chinese medicine for holistic healthcare.

Minister Teo’s call for interdisciplinary ‘AI bilingualists’ who can bridge technology and domain expertise directly aligns with NTU Singapore’s new master’s programmes, which are designed to cultivate precisely this blend of skills for an AI-driven future.

At the Semafor Next 3 Billion Summit, Minister Josephine Teo outlined Singapore’s approach to harnessing AI for development, emphasising the nation’s balance of innovation, governance and collaboration in a rapidly evolving ecosystem.

Generative AI has lowered barriers to entry, expanded enterprise applications and driven meaningful adoption in sectors such as manufacturing and semiconductors.

She also underscored the urgent need for talent bridging AI and domain expertise, a goal echoed in NTU's new master's programmes preparing future leaders for real-world impact.

Collectively, these programmes align with Singapore's priorities of cultivating a future-ready workforce, promoting responsible AI adoption and reinforcing its status as a trusted global hub for innovation and integrative healthcare.

They also build on NTU's existing postgraduate offerings in artificial intelligence, ensuring the university continues to play a leading role in shaping leaders for a technology-driven world.